

RIVERSDALE (WESTERN CAPE) ACCOMMODATION LIST

HIGHLIGHTS: Korentepoort Dam; Sleeping Beauty Day Hiking Trail; Old Jail & Coffee Shop; Julius Gordon Africana Centre; Baleia Wines; Aan't Vette Wines; Ikigai Coffee Bar; Trends Café and Bali Trading.



DE DOORKRAAL VINOTEL ****

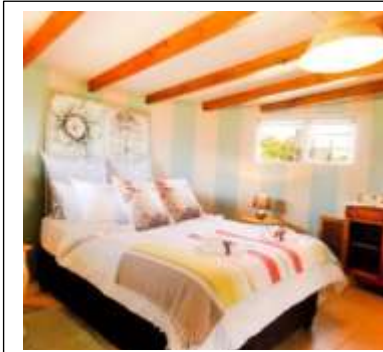
De Doornkraal Vinotel is a four-star family Hotel and comprises of a selection of luxury-, standard- and suite rooms with private entrances and cottages with private lounges. The hotel has a restaurant on the premises with exotic dishes and winery that offers wine tasting sessions on a reservation basis. The town of Riversdale is well-known for the Sleeping Beauty Day Hiking Trail.

*Swimming Pool *Restaurant *Winery *Business Travellers *Wi-Fi *Free Parking

Tel: 028 713 3838

Email: info@dedoornkraal.com

Bookings: <https://book.nightsbridge.com/15345>



DIE OPSTAL

Die Opstal offers country self-catering accommodation approximately 1km outside Riversdale with beautiful views of the Sleeping Beauty Mountain. There are 5 different self-catering cottages to choose from, sleeping 2-4 guest each. The farm venue also has a swimming pool and braai areas as guest facilities. The town of Riversdale is well-known for the Sleeping Beauty Day Hiking Trail.

*DSTV *Braai Areas *Wi-Fi *Swimming Pool *Secure Parking *Family Friendly

Tel: 071 609 6358

Email: piet@wispernet.co.za

Bookings: <http://www.dieopstalriversdal.co.za/contact.html>



DIBIKI HOLIDAY RESORT & CAMPING RIVERSDAL

The Dibiki Holiday Resort is a welcomed addition to Riversdale and offers a selection of 1-bedroom self-catering units and caravan and camping spots. The self-catering units comes standard with a bedroom, bathroom, open plan kitchen and braai area. The camping and caravan spots offer visitors clean ablution facilities – some sports have their own ablution blocks too. The resort also offers guests a swimming pool; well-maintained grounds and Wi-Fi.

*Braai Areas *Wi-Fi *Secure Parking *Swimming Pool *Family Friendly

Tel: 068 213 2845

Email: info@dibikiriversdal.co.za

Booking: <https://book.nightsbridge.com/29986>

Hessequa Tourism – The Explorer's Garden Route

www.explorersgardenroute.co.za

Towns: Witsand – Heidelberg – Riversdale – Albertinia – Stilbaai – Jongensfontein – Gouritsmond
Share Your Experience of Hessequa By Tagging (Explorer's Garden Route) & Using the **#ExploreHessequa**



FYNBOS GUEST HOUSE

Fynbos Guests House is known for its excellent services and authentic food - especially the English Breakfast that is included to your tariff. The guest house offers you comfortable and affordable double and single rooms - each room having its own entrance and reserved parking in front of the room. The venue has a beautiful swimming pool which is ideal for the summer days and there are also braai facilities on offer as guest facilities. The venue is pet friendly and guests can arrange for pets beforehand. The town of Riversdale is well-known for the Sleeping Beauty Day Hiking Trail and Korentepoort Dam & Bass Fishing facility.

Tel: 028 713 1056

Email: fynbos@net4u.co.za

Bookings: <https://book.nightsbridge.com/12194>



KORENTEPOORT DAM RESORT

The Korentepoort Dam Resort is located 18km outside of Riversdale via the Ladismith Road and offers 8 self-catering units. The first seven self-catering units comes standard with bedrooms, bathroom, kitchen and braai area. The last unit – the Skooltjie – can accommodate larger groups and has an open plan layout with bunker beds, bathroom and braai area.

*Braai Areas *Dam *Fishing *Family Friendly *Secure Parking *Picnics

Tel: 028 713 3316

Email: korente.oord@easycoms.co.za

Booking: <https://www.travelground.com/accommodation/korentepoort-dam/book>



MEURANT SELF-CATERING FAMILY COTTAGE

Meurant Cottages offers self-catering accommodation and can accommodate up to 13 guests and 4 units. The main cottage can accommodate 6 guests, while the main unit can accommodate 3. The other two garden units can accommodate 2 guests each. All the units come standard with their own bedroom(s); bathroom; kitchen and braai area.

*Braai Area *Secure Parking *DStv *Family Friendly

Tel: 083 417 5697

Email: meurantsc@gmail.com

Bookings: <https://www.travelground.com/accommodation/meurant-self-catering-family-cottages/book>

Hessequa Tourism – The Explorer's Garden Route

www.explorersgardenroute.co.za

Towns: Witsand – Heidelberg – Riversdale – Albertinia – Stilbaai – Jongensfontein – Gouritsmond
Share Your Experience of Hessequa By Tagging (Explorer's Garden Route) & Using the **#ExploreHessequa**



OAKHURST GUEST HOUSE ***

Oakhurst Guest House offers three comfortable self-catering units and 5 spacious guest house rooms within a private setting. The venue can accommodate up to 16 guests and is one of the preferred choices in Riversdale. The self-catering units comes standard with double bed, bathroom, kitchen, television and patio braai. The guest house rooms come standard with two single beds, bathroom and coffee / tea facilities.

*Braai Area *Secure Parking *Children's Playground *Swimming Pool *Ladies Bar

Tel: 028 713 3636

Email: info@oakhurstguesthouse.co.za

Bookings: <https://www.oakhurstguesthouse.co.za/>



SLEEPING BEAUTY GUEST HOUSE ***

The Sleeping Beauty Guests House accommodation consists of six rooms in the main house and a self-catering loft unit which has two bedrooms - each with private bath room and an open plan kitchen/ dining area. All rooms are en-suite and has a TV and tea and coffee making facilities. Free Wi-Fi is available in designated areas in the house. Ample parking is available on site.

*Wi-Fi *Secure Parking *Gardens *Business Travellers

Tel: 028 713 1651

Email: sleepingbeauty@iafrica.com

Bookings: <https://www.travelground.com/accommodation/sleeping-beauty-guest-house>



KWEEKKRAAL GUEST FARM

The Kweekkraal Guest Farm is located 9km outside of Riversdale along the N2 highway. The farm offers authentic self-catering units and can sleep a total of 34 guests. The farm offers beautiful grounds, bird watching, swimming pool and beautiful views of the Langeberg Mountain. The Kweekkraal Guest Farm also acts as wedding venue.

*Hiking Trails *Bird Watching *Swimming Pool *Fishing *Secure Parking

Tel: 076 312 7518

Email: reservations@kweekkraal.co.za

Bookings: <https://www.travelground.com/accommodation/kweekkraal-guest-farm/book>

Hessequa Tourism – The Explorer's Garden Route

www.explorersgardenroute.co.za

Towns: Witsand – Heidelberg – Riversdale – Albertinia – Stilbaai – Jongensfontein – Gouritsmond
Share Your Experience of Hessequa By Tagging (Explorer's Garden Route) & Using the **#ExploreHessequa**



OUDEBOSCH GUEST FARM

Oudebosch Guest Farm is located 15km outside Riversdale, close to the Korentepoort Dam. The venue offers two self-catering units, which can accommodate up to 9 guests. The self-catering units comes standard with bedrooms, bathroom, fully equipped kitchen, lounge, television and outdoor braai area. Oudebosch Guest Farm offers horse riding as guest activity.

*Horse Riding *Canoeing *Hiking *Nature Drives *Swimming Pool

Tel: 082 787 2000

Email: info@oudebosch.co.za

Bookings: <http://oudebosch.co.za/>



JUST ONE MORE

Just One More is a self-catering apartment which can accommodate 8 guests in two self-catering units. The Studio is a one-bedroom unit accommodating 3 pax and offers a bathroom, kitchen, lounge and secure parking. The Garden Cottage can accommodate 5 pax and offers 2 bedrooms, bathroom, kitchen, lounge and secure parking. The venue also offers guests a braai area and is located close to the all major shopping centres.

*Braai Areas *Secure Parking *Wi-Fi *Family Friendly

Tel: 028 713 1671

Email: riversdalverf@intellect.co.za

Bookings: <https://www.travelground.com/accommodation/just-1-more>



HERITAGE HOUSE SELF-CATERING COTTAGES

Heritage House is a quiet and peaceful place if you need a break out of the city. The venue can accommodate up to 8 guests and offers 2 well equipped cottages – each having two bedrooms, a bathroom, fully equipped kitchen, lounge, television and braai area. The cottages are in the historical Long Street and is close to the Aan't Vette Restaurant and Winery.

*Braai Area *Secure Parking *Wi-Fi *Pets By Arrangement

Tel: 028 713 3076

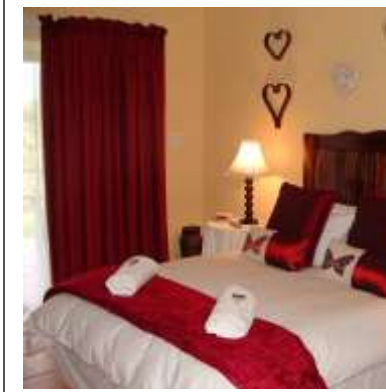
Email: robyn.learmonth@hotmail.co.uk

Bookings: <https://www.travelground.com/accommodation/heritage-house-self-catering-cottages-and-rooms/book>

Hessequa Tourism – The Explorer's Garden Route

www.explorersgardenroute.co.za

Towns: Witsand – Heidelberg – Riversdale – Albertinia – Stilbaai – Jongensfontein – Gouritsmond
Share Your Experience of Hessequa By Tagging (Explorer's Garden Route) & Using the **#ExploreHessequa**



DEO VOLENTE GUEST HOUSE ***

Deo Volente is a beautiful guest house located just outside the town of Riversdale along the Ladismith road and can accommodate up to 10 guests in a selection of 3 double bed suites and 1 self-service unit. The suites come standard with a bedroom and bathroom, while the self-service unit offers one bedroom, bathroom and coffee/tea facilities. The guests house also serves as wedding venue.

*Swimming Pool *Lapa *Communal Braai Area *Wedding Venue *Secure Parking

Tel: 028 713 2882

Email: johannesmalherbe@gmail.com

Bookings: <https://www.safarinow.com/go/deovolenteriversdale/>



OAKDALE COTTAGES

Oakdale Cottages is located about 2 kilometers outside town on a farm, with full view of the Langeberg Mountain. The venue offers eight family friendly self-catering cottages. All the units come standard with bedrooms, bathroom, full kitchen and lounge area. The town of Riversdale is the perfect outdoor adventure destination as it offers the Sleeping Beauty Day Hiking Trail and a selection of MTB trails. The town is also home to Korentepoort Dam – which is a mecca for Bass Fishing along the Garden Route.

Tel: 028 713 3556

Email: oakdalecottages@gmail.com

Bookings: <https://www.travelground.com/accommodation/oakdale-cottages/book>



JOURNEY GUEST HOUSE

Journey Guest House offers stylishly decorated and comfortably furnished rooms, each with its own private entrance and a TV with selected DStv channels. The Family Suite accommodates 2 guests in a double bed and 1 person in a single bed; and has an en-suite bathroom fitted with a bath and shower. The Double Rooms accommodates 2 guests in a double bed and has an on-suite bathroom fitted with a bath. Breakfast, coffee and tea are included in the rate, while dinner is available by prior arrangement.

Tel: 083 444 3808

Email: thesaexclusive@gmail.com

Bookings: <https://www.travelground.com/accommodation/journey-guest-house>

Hessequa Tourism – The Explorer's Garden Route

www.explorersgardenroute.co.za

Towns: Witsand – Heidelberg – Riversdale – Albertinia – Stilbaai – Jongensfontein – Gouritsmond
Share Your Experience of Hessequa By Tagging (Explorer's Garden Route) & Using the **#ExploreHessequa**



RUSTICANA GUEST HOUSE ***

Rusticana Guest House is located at the foot of the Sleeping Beauty Mountain in Riversdale and offers 17 rooms. The accommodation at Rusticana Guest House is provided in 3 room categories of which all are tastefully decorated and furnished with either a queen-size, double and/or bunk bed beds. Each of the rooms feature an en-suite bathroom with a bath and or a shower. All rooms have private entrances.

Swimming Pool *Braai Area *Wheelchair Friendly *Secure Parking

Tel: 082 784 9571

Email: rusticana@telkomsa.net

Bookings: <http://www.rusticanabb.co.za/>



CENTRAL BOUTIQUE HOTEL

The Central Boutique Hotel comprises of 12 en-suite rooms. The classic rooms feature Oregon pine floors and each room comes fitted with a flat screen satellite TV, a fan and heater as well as a seating area. The private bathroom offers a bath or shower. Queen-sized beds, double beds, and single beds are available, each accommodating a maximum of 2 guests. The venue is located in the Main Road of Riversdale and is close to the major businesses.

*Conferencing Facilities *Free Wi-Fi *Family Friendly *Restaurant *Bar

Tel: 072 731 3783

Email: info@centralboutiquehotel.co.za

Book: <http://centralboutiquehotel.co.za/>



TEEN DIE BERG COTTAGES

Teen Die Berg Cottages is located about 15km outside Riversdale, close to the Korentepoort Dam. The accommodation comprises 3, 2-bedroom cottages which can accommodate up to 4 guests in each at a time. The main bedroom has a double bed and the second bedroom has 2 single beds. It has a bathroom fitted with a shower, toilet and basin. The farm is the ideal location for guests looking for that faraway feeling.

*Braai Area *Secure Parking *Family Friendly *Country Location *Mountain View

Tel: 082 907 3099

Email: info@teendieberg.co.za

Bookings: <https://teendieberg.co.za/tuis/>

Hessequa Tourism – The Explorer’s Garden Route

www.explorersgardenroute.co.za

Towns: Witsand – Heidelberg – Riversdale – Albertinia – Stilbaai – Jongensfontein – Gouritsmond
Share Your Experience of Hessequa By Tagging (Explorer’s Garden Route) & Using the **#ExploreHessequa**