

**WITSAND (WESTERN CAPE) ACCOMMODATION LIST**

**HIGHLIGHTS:** Witsand Nature Reserve; Whale Watching; SUP; Breede River Fishing; Surfing; Snorkeling; River Breeze Restaurant; Pili Pili Adventure Centre; Koffie N Kletz and The Anchorage Beach Restaurant.



**BEACH HOUSE WITSAND**

This award-winning Luxurious Beach House caters to the discerning luxury traveller and is situated in the safe seaside village of Witsand with direct beach access. The villa offers you modern luxurious facilities in a self-catering home right on the beach. The unit accommodates 10 guests and has 5 bedrooms, 4 bathrooms, open plan living area and covered patio with braai facilities.

\*Braai Facilities \*Splash Pool \*Secure Parking

**Tel:** 083 658 0700

**Email:** [wendi@beachhousewitsand.co.za](mailto:wendi@beachhousewitsand.co.za)

**Bookings:** <https://beachhousewitsand.co.za/>



**WITSAND MUNICIPAL CAMPING & CARAVAN PARKS**

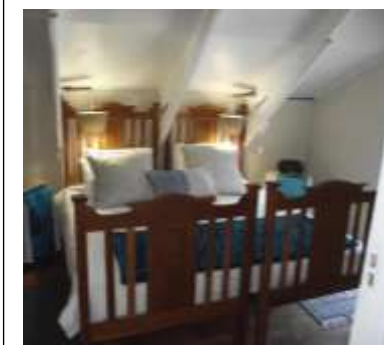
Witsand offers you two Municipal Caravan & Camping Parks – the **Middle Camp** is located on the eastern end, right on the beach front and offers 50 camping spots and two-bedroom self-catering units. The Park is close to the tidal pool which is ideal for families. The **West Camp** is the first Caravan & Camping Park as you enter Witsand and has 92 stands and offers two-bedroom self-catering units. The Hessequa Municipal facilities are well maintained and in top condition.

\*6 Persons Per Stand \*Family Friendly \*Fishing \*Beachfront \*Tidal Pool

**Tel:** 028 713 7868

**Email:** [witsand@hessequa.gov.za](mailto:witsand@hessequa.gov.za)

**Bookings:** [witsand@hessequa.gov.za](mailto:witsand@hessequa.gov.za)



**AT THE C**

@ The C is a beachfront holiday flat in Witsand and features accommodation with a balcony around 1.7 km from Westfield 4WD-trail. The apartment has 2 bedrooms, a flat-screen TV with satellite channels, an equipped kitchen with a dishwasher and a microwave, a washing machine, and 1 bathroom with a shower. The holiday flat offers guests free parking and is ideal for a family getaway.

\*Swimming Pool \*Braai Area \*Secure Parking \*Ocean View

**Tel:** Online bookings only

**Email:** Online bookings only

**Bookings:** <https://tinyurl.com/y4eybgmx>

**Hessequa Tourism – The Explorer's Garden Route**

[www.explorersgardenroute.co.za](http://www.explorersgardenroute.co.za)

**Towns:** Witsand – Heidelberg – Riversdale – Albertinia – Stilbaai – Jongensfontein – Gouritsmond  
Share Your Experience of Hessequa By Tagging (Explorer's Garden Route) & Using the **#ExploreHessequa**



### **BARRY'S SELF-CATERING HOLIDAY ACCOMMODATION**

Barry's Holiday Accommodation offers you highly recommended self-catering units in Witsand. All the units come standard with beautiful views and their own bedroom(s) and bathroom(s). Some of the units has braai areas too. Barry's Holiday Accommodation includes the units of Waterford (sleeps 4); Smitsand (sleeps 4); Kite View (sleeps 6); Net Net (sleeps 16); Breede View (sleeps 11) and Pole Pole (sleeps 11).

\*Self-Catering \*Secure Parking

Tel: 028 537 1717

Email: [accom@witsand.co.za](mailto:accom@witsand.co.za)

Bookings: <https://book.nightsbridge.com/24821>



### **BREEDE RIVER LODGE**

The Breede River Lodge is located close to the waterfront and offers a combination of fishermen, luxury and waterfront units – which ranges from a one bedroom to two-bedroom units. The units come standard with their own bathroom, bedroom(s), coffee/tea facilities and televisions.

The town of Witsand is a watersport and fishermen's paradise.

\*Waterfront Units \*Secure Parking \*Limited Wi-Fi

Tel: 072 767 3779

Email: [info@breederiverlodge.co.za](mailto:info@breederiverlodge.co.za)

Bookings: <https://book.nightsbridge.com/14565>



### **THE BIG COB CHALETs**

The Big Cob offers 2, full equipped self-catering chalets situated in Witsand. Both self-catering chalets feature 3 bedrooms with 2 three-quarter beds in each, 1 full bathroom, a fully equipped kitchen, an open-plan living area, covered braai facilities, laundry facilities and a double carport. Other features include a TV with Full DStv, free Wi-Fi and bedding. Witsand is the perfect destination for watersport activities with the beach and Breede River as main attractions.

\*Wi-Fi \*Secure Parking \*Braai Facilities

Tel: 082 777 5178

Email: [bigcobchalets@gmail.com](mailto:bigcobchalets@gmail.com)

Bookings: [http://www.bigcobchalets.co.za/accom\\_booking.php](http://www.bigcobchalets.co.za/accom_booking.php)

**Hessequa Tourism – The Explorer's Garden Route**

[www.explorersgardenroute.co.za](http://www.explorersgardenroute.co.za)

**Towns:** Witsand – Heidelberg – Riversdale – Albertinia – Stilbaai – Jongensfontein – Gouritsmond  
Share Your Experience of Hessequa By Tagging (Explorer's Garden Route) & Using the **#ExploreHessequa**



**COZ'Y COTTAGE**

Coz'y Cottage can accommodate up to 6 guests and comprises 2 bedrooms, 2 bathrooms, and an open-plan kitchen, dining and living area. The first and second bedrooms each contain a double bed - 2 children can be accommodated on day beds in the open-plan area. The cottage has a fully equipped kitchen, braai area, secure parking and is less than 300m from the beachfront.

Witsand offers a variety of activities ranging from snorkeling to waterboarding.

**Tel:** 083 530 7474

**Email:** [christellezv2@opensurf.co.za](mailto:christellezv2@opensurf.co.za)

**Bookings:** <https://www.travelground.com/accommodation/cozy-cottage-19/book>



**HEPPIE-NES**

Heppie-Nes is a quaint double-story self-catering house situated in the secure Duinepark complex in Witsand at the mouth of Breede River. Witsand is a good fishing area and is popular for kitesurfing and windsurfing. The house can accommodate up to 6 guests and comprises 3 upstairs bedrooms, 2 bathrooms, an open-plan kitchen and living area. The kitchen is fully equipped for self-catering and includes a stove and oven and a microwave.

\*Braai Area \*Secure Parking

**Tel:** Online bookings only

**Email:** Online bookings only

**Bookings:** <https://www.travelground.com/accommodation/heppie-nes-19/book>



**WITSAND POSHPACKERS**

Net-Net consists of two units which can accommodate collectively 12 guests. The Gecko Room has two bedrooms and accommodates 4 guests. The unit offers free Wi-Fi, coffee / tea facilities and braai area.

The JJ Dorm is a 8 bed mixed dormitory with two bathrooms, a kitchen, lounge, television and braai area.

\*Secure Parking \*Television \*Braai Area

**Tel:** 028 537 1717

**Email:** [acom@witsand.co.za](mailto:acom@witsand.co.za)

**Bookings:** <https://book.nightsbridge.com/24821>

**Hessequa Tourism – The Explorer’s Garden Route**

[www.explorersgardenroute.co.za](http://www.explorersgardenroute.co.za)

**Towns:** Witsand – Heidelberg – Riversdale – Albertinia – Stilbaai – Jongensfontein – Gouritsmond  
Share Your Experience of Hessequa By Tagging (Explorer’s Garden Route) & Using the **#ExploreHessequa**



#### REMOTE LOCATIONS WITSAND – GLAMPING

The Remote Locations Glamping in Witsand is new concept that is located near the Breede River Mouth. The location offers 10 guest furnished tents, which are set-up on the edge of a sand cliff, ensuring endless views over the Indian Ocean.

Guests has access to a private beach below the cliffs and can enjoy a day of sunbathing or cooling off in the ocean. The furnished tents can sleep two guests each and has private ablution facilities and bucket shower. The town of Witsand is known as a top fishing destination with the Breede River part of the town.

**Tel:** 076 268 0501

**Email:** [info@remotelocations.co.za](mailto:info@remotelocations.co.za)

**Book:** [www.remotelocations.co.za](http://www.remotelocations.co.za)



#### THE WHALE VIEW COTTAGE

Whale View Cottage is a unique, well equipped 2-bedroom self-catering timber cottage situated right on the beachfront in Duinepark Witsand.

The cottage comes with a full bathroom which has a large comfortable bath with rain shower over the bath. The main bedroom has its own bathroom. The cottage can accommodate 4 sharing adults or a family in the 2 bed rooms with each with its own double bed. The cottage allows pets, for which there has been prior arrangement. The coastal town of Witsand is a popular beach destination and SUP, kitesurfing and snorkeling is popular activities.

**Tel:** 083 281 0501

**Email:** [whale.cottage@proconmanage.co.za](mailto:whale.cottage@proconmanage.co.za)

**Bookings:** <https://book.nightsbridge.com/19057>



#### WHALE WATCHERS INN

Whale Watchers Inn is a 3-star Guesthouse offering both Bed & Breakfast as well as serviced, self-catering family units, which also have the added option of a full country breakfast. There are five comfortable en-suite double rooms available on a bed & breakfast basis, four of which are sea-facing and the other has a courtyard view. All rooms offer TV's with DSTV decoder and smart card, fridges and tea/coffee making facilities and Whale Watchers Inn also offers free Wi-Fi Internet facilities to guests. Witsand is a well-known watersport destination and offers fishing in the Breede River and endless fun at the Blue Flag beach.

**Tel:** 028 537 1825

**Email:** [whaleinn@dorea.co.za](mailto:whaleinn@dorea.co.za)

**Book:** <https://book.nightsbridge.com/16185>

### Hessequa Tourism – The Explorer's Garden Route

[www.explorersgardenroute.co.za](http://www.explorersgardenroute.co.za)

**Towns:** Witsand – Heidelberg – Riversdale – Albertinia – Stilbaai – Jongensfontein – Gouritsmond  
Share You Experience of Hessequa By Tagging (Explorer's Garden Route) & Using the **#ExploreHessequa**