

ALBERTINIA (WESTERN CAPE) ACCOMMODATION LIST

HIGHLIGHTS: Garden Route Game Lodge; Gouritz Bridge Lion, Bird & Reptile Park; Tuinplaas & Tiny Town; Whispering Tree; House Of Aloes; Aloe Ferox; Albertinia Golf Club & Gourits River Campsite



GARDEN ROUTE GAME LODGE ****

The Garden Route Game Lodge is located only 5km from Albertinia and offers visitors luxury accommodation within a beautiful and secluded environment. The Lodge offers bush villas, luxury suites, family suites and honeymoon villas. The Lodge also offers visitors the BIG 5; game drives; MTB trail; reptile center; restaurant and day spa.

*En-suite Bathrooms *Luxury Rooms *Wi-Fi *Views *Flat screen Televisions

Tel: 028 735 1200

Email: reservations@grgamelodge.co.za

Bookings: <https://bookings.grgamelodge.co.za/grgamelodge/book/dates>



VOËLROEPERSFONTEIN GUEST HOUSE

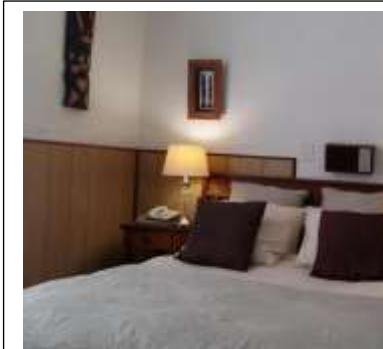
The tranquil Voëlroepersfontein Guest House is home to the award-winning Whispering Tree and offers travellers 6 spacious and well-equipped rooms. The venue is in the heart of Albertinia and is close to coffee shops and less than 15 minutes from a game drive at Garden Route Game Lodge. The rooms at Voëlroepersfontein all comes standard with their own bedroom(s), bathroom, mini fridge and television.

*Wi-Fi *Secure Parking *Picnic Areas

Tel: 028 735 1016

Email: martmari@mweb.co.za

Bookings: <https://book.nightsbridge.com/24846>



ALBERTINIA HOTEL & BAR ***

The Albertinia Hotel is in the centre of town and offers travellers 10 spacious rooms. All the rooms come standard with a bedroom, en-suite bathroom and coffee/tea facilities. The rooms are well equipped for single occupancy, couples and families. Albertinia Hotel is also home to a Restaurant and Bar which makes this venue the ideal budget location when exploring Albertinia.

*Bar *Free Parking *Wi-Fi *Restaurant

Tel: 028 735 1030

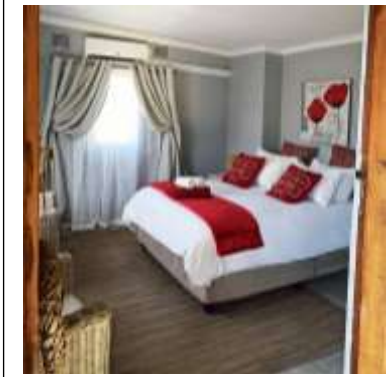
Email: info@albertinahotel.co.za

Bookings: <https://book.nightsbridge.com/17283>

Hessequa Tourism – The Explorer's Garden Route

www.explorersgardenroute.co.za

Towns: Witsand – Heidelberg – Riversdale – Albertinia – Stilbaai – Jongensfontein – Gouritsmond
Share Your Experience of Hessequa By Tagging (Explorer's Garden Route) & Using the **#ExploreHessequa**



GOURITS RIVER GUESTS FARM & CAMPING VENUE

The Gourits River Guest Farm & Camping Venue is located about 16km from Albertinia towards the famous Gourits River. The farm offers guest house accommodation (sleeps 6); glamping cabin (sleeps 6) and eco-camping plots.

The guests house offers 2 bedrooms, 2 bathrooms, kitchenette and braai area, while the cabin offers 1 bedroom, 1 bathroom, kitchenette and braai area.

*Self-Catering *Secure Parking *Wi-Fi *MTB *Water Activities *Quad Biking

Tel: 076 398 0892 (WhatsApp)

Email: rguestfarm@gmail.com

Bookings: <https://book.nightsbridge.com/24343>



ALOE FEROX GUEST REST

The Aloe Ferox Guest Rest is a self-catering venue located close to the N2 and close to the Shell Garage. The venue offers visitors budget self-catering accommodation and can accommodate up to 50 guests. Aloe Ferox Guest Rest offers two occupancy units: single units, which can accommodate up to 4 guests with 1 bedroom, 1 bathroom and well-equipped kitchen. The second option is double units which can accommodate up to 8 guests and has 2 bedrooms, 1 bathroom and well-equipped kitchen. As a budget accommodation option, the venue is ideally situated close to the N2 for the traveller on the go.

Tel: 028 735 2055

Email: bookings@guestrest.co.za

Bookings: <https://www.safarinow.com/go/aloeferoxguestrestalbertinia/requestquote>



SKILPADGAT GUEST FARM

TSkilpadgat Guest Farm is the ideal place to get away from the hustle and bustle of the city life – to rejuvenate the senses and to bond again as a family. The guest farm is 5km from Albertinia town centre and can accommodate up to 6 guests. The farm house has 3 bedrooms, a shared bathroom, full kitchen and braai area. At Skilpadgat you have beautiful farm view – you can even bring your Mountain Bike! The venue is regrettably has no television and no pets are allowed.

*Secure Parking *Farm Atmosphere *Braai Areas *MTB Trails

Tel: 028 735 2001

Email: info@skilpadgat.co.za

Bookings: <https://www.safarinow.com/go/skilpadgat/requestquote>

Hessequa Tourism – The Explorer's Garden Route

www.explorersgardenroute.co.za

Towns: Witsand – Heidelberg – Riversdale – Albertinia – Stilbaai – Jongensfontein – Gouritsmond
Share Your Experience of Hessequa By Tagging (Explorer's Garden Route) & Using the **#ExploreHessequa**



WOLWEKRAAL GUEST HOUSE

Wolwekraal Guest House is a quaint holiday home set on a picturesque farm located 8 kilometers outside the town of Albertinia. Accommodation is provided in a 2-bedroom farmhouse which can accommodate up to 5 guests. The bedrooms are both furnished with a double bed while a single bed is provided in the lounge. The rooms share the use of a bathroom fitted with a shower. The kitchen is well-equipped. In addition, the house also offers a TV in both bedrooms, on-site parking, and braai facilities on the patio.

Tel: 028 735 1922

Email: wolwekraalbb@gmail.com

Bookings: <https://www.travelground.com/accommodation/wolwekraal-gastehuis/book>



7 MILLS SELF-CATERING

7 Mill is a large three-bedroom house that is comfortably furnished in the town of Albertinia. Two of the bedrooms have queen-size beds and the third room has two single beds. The bathroom has a shower and a bath and is shared by guests, while the kitchen is fully equipped and has all the necessary for guests to prepared cooked meals. The lounge is open-plan and features a TV with local channels and there is also a patio outside with a built-in braai and table and chairs. The venue is ideal for travellers looking for a tranquil family getaway along the Garden Route.

Tel: 082 566 0447

Email: None

Bookings: <https://www.safarinow.com/go/7millalbertinia/requestquote>



ALBERTINIA DORPSHUIJS

Dorpsluijs Guesthouse is situated in the center of Albertinia and comprises of 2 en-suite bedrooms and a communal lounge and dining room. There is a tea and coffee station in the lounge, TV with a DVD player and OVHD. Free Wi-Fi is also provided. Dorpsluijs is a smoke-free zone and can't accommodate pets. There is on street parking only, however, it's a safe environment to give you peace of mind about your car being parked on the street. A light breakfast makes part of your booking and can be enjoyed in the morning.

Tel: Online bookings only

Email: Online bookings only

Bookings: <https://www.travelground.com/accommodation/dorpsluijs-b-b/book>

Hessequa Tourism – The Explorer's Garden Route

www.explorersgardenroute.co.za

Towns: Witsand – Heidelberg – Riversdale – Albertinia – Stilbaai – Jongensfontein – Gouritsmond
Share Your Experience of Hessequa By Tagging (Explorer's Garden Route) & Using the **#ExploreHessequa**